



**DELIVERING
EXCELLENCE
SINCE 2012**

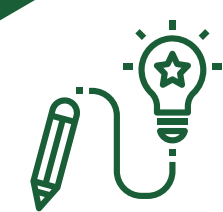


**LITHIUM
ION
Battery**

VGPL1143

Electric Two Wheeler Battery

Model	◇ VGPL1143
Type of cell	◇ Cylindrical NMC 18650 - BAK
Nominal Capacity	◇ 43Ah
Nominal Voltage	◇ 72V
Total Energy	◇ 3.096 KWH
Configuration	◇ 20S 17P
Charging Current	◇ 0.5C
Discharging Current	◇ 1C
Charging Time	◇ Around 3-4 hours
Maximum Pulse Discharge Current	◇ 60A for 10 Second
Cycle Life	◇ >1000 Cycles
Operating Discharge Range @Discharge	◇ 0.C to + 55
Storage Temperature Range	◇ 0.C to + 45
IP Class	◇ IP67
Voltage Range	◇ 55V-84V
Dimensions (L*W*H) +3 MM	◇
Battery Casing	◇ Metal(MS)
Protection	◇ Short Circuit & Over Charge Protection
Connector	◇ 3-Pin and SB-75 with LED
Communication Protocol	◇ CAN



DESIGN

Simple plug and play installation modular design



PERFORMANCE

Provides Greater Mileage Enhance Fast Charging



TECHNOLOGY

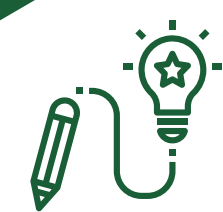
Proprietary and super BMS Remote Monitoring system



VGPL1F26

Electric Two Wheeler Battery

Model	◇ VGPL1F26
Type of cell	◇ Cylindrical NMC 18650 - BAK
Nominal Capacity	◇ 26Ah
Nominal Voltage	◇ 60V
Total Energy	◇ 1.56 Kwh
Configuration	◇ 17S 10P
Charging Current	◇ 0.5C
Discharging Current	◇ 1C
Charging Time	◇ Around 3-4 hours
Maximum Pulse Discharge Current	◇ 60A for 10 Second
Cycle Life	◇ >1000 Cycles
Operating Discharge Range @Discharge	◇ 0.C to + 55
Storage Temperature Range	◇ 0.C to + 45
IP Class	◇ IP67
Voltage Range	◇ 48V-71.4 V
Dimensions (L*W*H) +3 MM	◇
Battery Casing	◇ Metal(MS)
Protection	◇ Short Circuit & Over Charge Protection
Connector	◇ SB-75
Communication Protocol	◇ CAN



DESIGN

Simple plug and play installation modular design



PERFORMANCE

Provides Greater Mileage Enhance Fast Charging



TECHNOLOGY

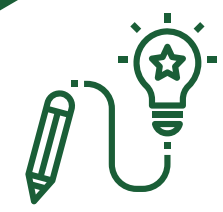
Proprietary and super BMS Remote Monitoring system



VGPL48100

Electric Three Wheeler Battery

Model	◇ VGPL48100
Type of cell	◇ Prismatic LFP - High Star
Nominal Capacity	◇ 100Ah
Nominal Voltage	◇ 48V
Total Energy	◇ 4.8KWH
Configuration	◇ 15S 1P
Charging Current	◇ 0.5C
Discharging Current	◇ 1C
Charging Time	◇ Around 3-4 hours
Maximum Pulse Discharge Current	◇ 100A for 10 Seconds
Cycle Life	◇ >2000 Cycles
Operating Discharge Range @Discharge	◇ 0.C to + 55
Storage Temperature Range	◇ 0.C to + 45
IP Class	◇ IP67
Voltage Range	◇ 40V-54.7V
Dimensions (L*W*H) +3 MM	◇
Battery Casing	◇ METAL(MS)
Protection	◇ Short Circuit & Over Charge Protection
Connector	◇ SB-75
Communication Protocol	◇ CAN



DESIGN

Simple plug and play installation modular design



PERFORMANCE

Provides Greater Mileage Enhance Fast Charging



TECHNOLOGY

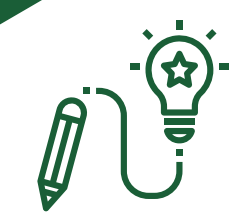
Proprietary and super BMS Remote Monitoring system



VGPL51105

Electric Three Wheeler Battery

Model	◇ VGPL51105
Type of cell	◇ Prismatic LFP - High Star
Nominal Capacity	◇ 105Ah
Nominal Voltage	◇ 51.2V
Total Energy	◇ 5.12 KWH
Configuration	◇ 16S 1P
Charging Current	◇ 0.5C
Discharging Current	◇ 1C
Charging Time	◇ Around 3-4 hours
Maximum Pulse Discharge Current	◇ 100A for 10 Seconds
Cycle Life	◇ >2000 Cycles
Operating Discharge Range @Discharge	◇ 0.C to + 55
Storage Temperature Range	◇ 0.C to + 45
IP Class	◇ IP67
Voltage Range	◇ 40V-58.4V
Dimensions (L*W*H) +3 MM	◇
Battery Casing	◇ METAL(MS)
Protection	◇ Short Circuit & Over Charge Protection
Connector	◇ SB-75
Communication Protocol	◇ CAN



DESIGN

Simple plug and play installation modular design



PERFORMANCE

Provides Greater Mileage Enhance Fast Charging



TECHNOLOGY

Proprietary and super BMS Remote Monitoring system



LITHIUM ION CHARGER

Model	VGPL48V6A	VGPL60V6A	VGPL71V10A
Maximum Input Voltage	176~264VAC	176~264VAC	176~264VAC
Rated Output Voltage	54.6±0.3V	67.2±0.3V	84±0.3V
Rated Output Current	6.0±0.2A	6.0±0.2A	10±0.2A
Charging Timing Time	4.5±0.5h	4.5±0.5h	4.5±0.5h
DC Charging Efficiency	≥90%	≥90%	≥91%
Operating Temperature Range	(-30~+50)°C	(-30~+50)°C	(-30~+50)°C
Operating Humidity Range	10%≤90%	10%≤90%	10%≤90%
Storage Temperature Range	(-40~+70)°C	(-40~+70)°C	(-40~+70)°C
Storage Humidity Range	≤95%	≤95%	≤95%
Fan Supply Voltage	12±0.5V	12±0.5V	12±0.5V



DESIGN
Simple plug and play installation modular design

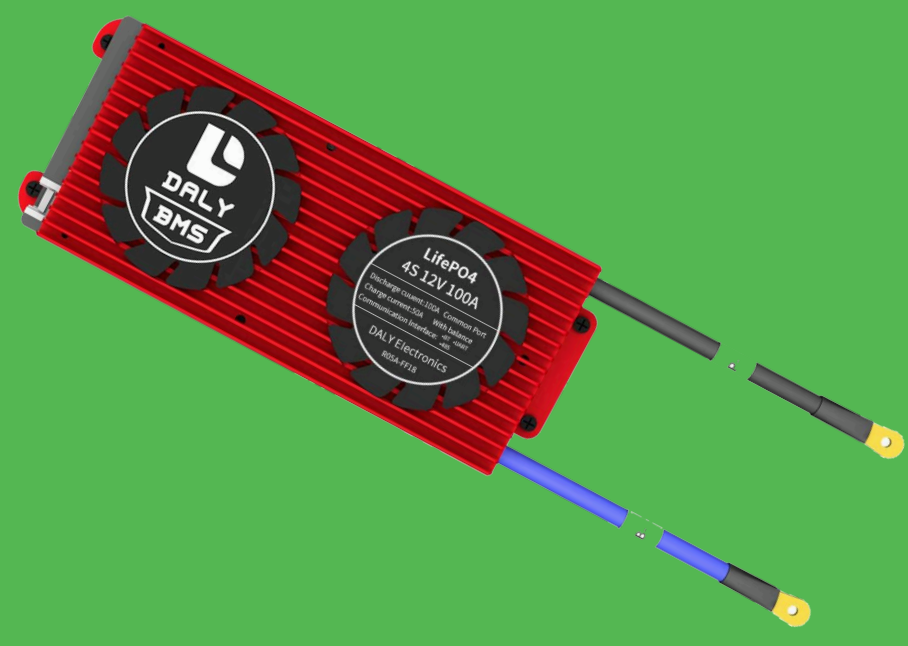
PERFORMANCE
Provides Greater Mileage Enhance Fast Charging

TECHNOLOGY
Proprietary and super BMS Remote Monitoring system

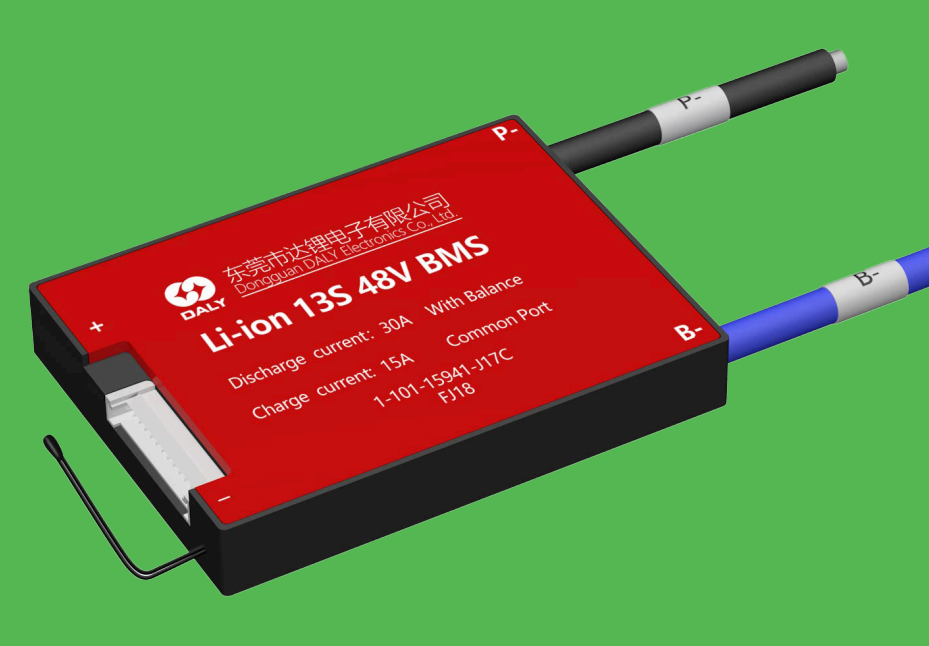
Accessories



BLUETOOTH



DALY BMS



DALY BMS



JBD BMS



**CYLINDERCAL
NMC CELL**



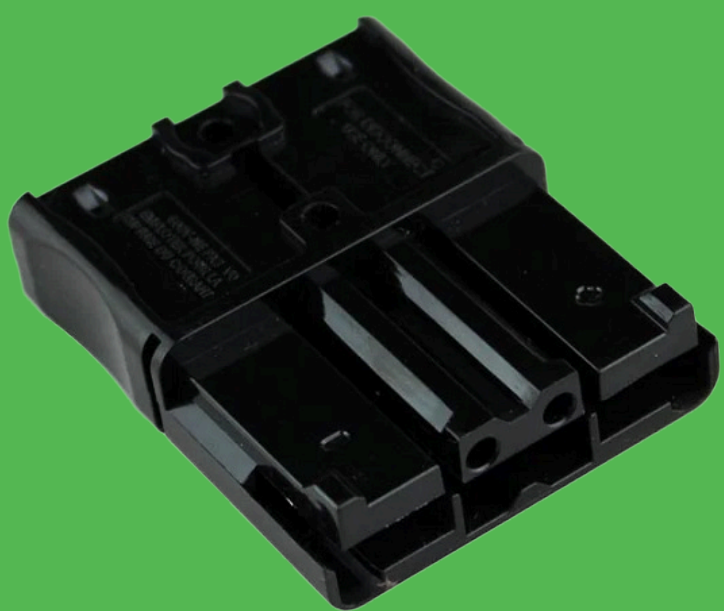
**HIGH STAR
PRISMATIC**



EVE CELLS



CELL HOLDER



**SB-75
CONNECTOR**



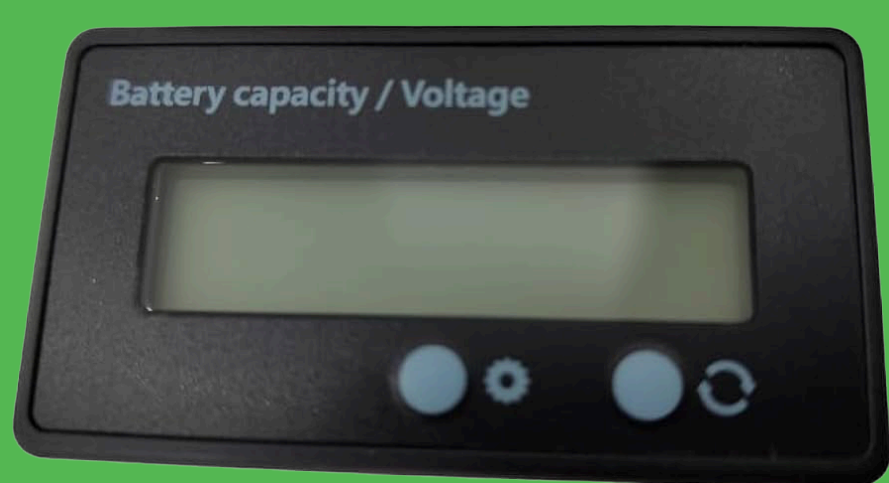
**SB-50
CONNECTOR**



PG GLAND



**COPPER
BUSBAR**



**SOC BATTERY
INDICATOR**



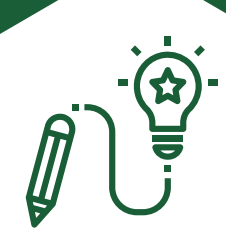
**PRESSURE
VENT**



M6 SCREW



SILICON WIRES



DESIGN

Simple plug and
play installation
modular design



PERFORMANCE

Provides Greater
Mileage Enhance
Fast Charging



TECHNOLOGY

Proprietary and
super BMS Remote
Monitoring system



EMAIL

support@voltguardpower.com



CONTACT NO.

8595 340 300 | 8285 150 160



WEBSITE

www.voltguardpower.com



HEAD OFFICE ADDRESS

UG-11 bestech city centre
mall, NH-8 Dharuhera
123106 Haryana



COMPANY ADDRESS

H1-773 Riico Industrial Area
Khuskhera Tapukda (Bhiwadi)
301707

